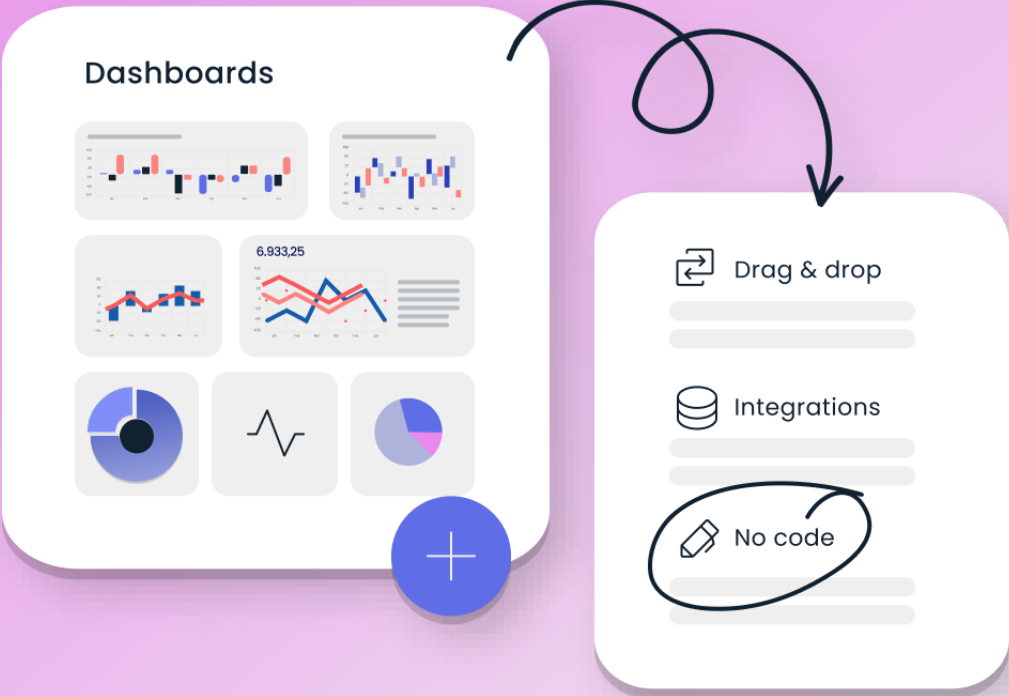
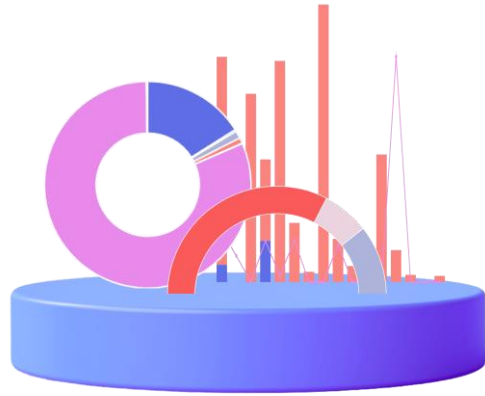


sweet PERFORMANCE PRODUCT SHEET



Performance



The Sweet Performance story begins with a shared passion for simplifying data comprehension with our customers. It took us a few years of creating customized charts and performance dashboard in every customer implementation to understand that every customer possesses a unique set of requirements and insights. A one-size-fits-all approach simply wouldn't cut it. We wanted to bridge the gap between complex data and everyday users, transforming information into actionable insights. We wanted it to be so easy everyone can do it.

Our driving force behind Sweet Performance was the commitment to make data accessible to everyone, regardless of their technical expertise. We envisioned a tool that would not only connect seamlessly with Sweet CRM, Sweet Automation and Sweet Forms but would also tailor the data visualization experience to the specific needs of every user.

The result was Sweet Performance, a "Do It Yourself" dashboard tool, that's not a business intelligence competitor, but a neat and easy dashboard and report builder for businesspeople. We not only wanted to make it easy to construct dashboards to measure performance, but also to share these insights effortlessly among others.

Our background story is woven with the threads of innovation, a commitment to simplicity, and the unwavering belief that empowering individuals with their data leads to informed decisions, collaboration, and ultimately, success.

Dashboard Builder | Charts | User friendly

Track performance | Share insights

Integrate with CRM or Forms

Seamless integration for dynamic visualization

Integrate

Selecting the data to visualize

In the dynamic landscape of data management, Sweet Performance distinguishes itself as an effortless user-friendly tool, offering a comprehensive solution to visualize your key performance indicators (KPIs), statistics, and results. It's a solution crafted with the understanding that your data is a valuable asset dispersed across multiple systems. With your integrations at hand, you can transform your data management into a unified and streamlined experience, driving your organization forward with the insights gained from a singular, cohesive data source.



How? At the heart of Sweet Performance lies our robust integrations engine, [Sweet Automation](#). This powerful tool serves as the backbone for seamlessly connecting with all your data sources, transforming raw information into meaningful visualizations. By harnessing the capabilities of Sweet Automation, you can effortlessly integrate data from various platforms, including your CRM, Digital Forms, and more.

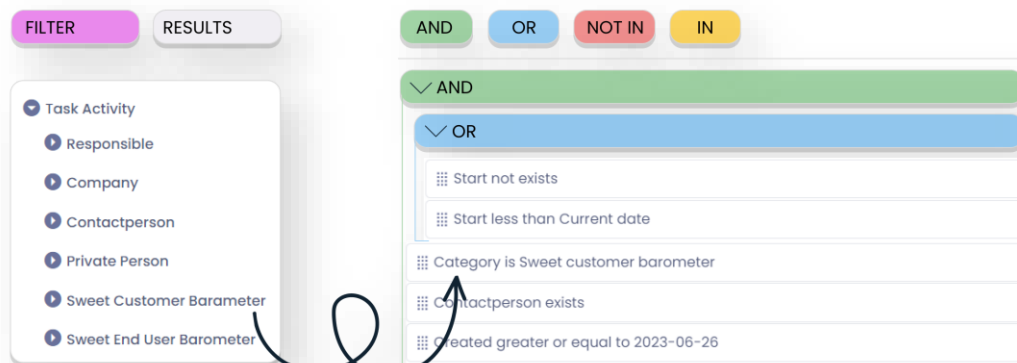
If your data requires adjustments and transformations beyond its original system, rest assured, we also support Excel files as a data source!

Data mastery made easy

Modeling

Data modeling made easy

We understand that not every user is a data scientist or Business Intelligence specialist, so our platform empowers you to focus on what matters most—extracting meaningful insights without getting lost in technical complexities. However, it's important to note that we specialize in a user-friendly approach, and as such, we don't delve into advanced data modeling aspects, such as defining relation tables or setting data hierarchies. Our focus is on making your data experience seamless and accessible, letting you derive meaningful insights without the need for advanced technical skills.



This is what we do support

- **Aggregation and summarization:** Determining how data should be aggregated or summarized to provide a concise overview. This is essential for generating key metrics and indicators that drive decision-making.
- **Data formatting and transformation:** Ensuring that data is formatted in a way that is conducive to visualization. This may involve transforming raw data into a format suitable for creating charts, graphs, or other visual elements.
- **Handling data anomalies:** Identifying and addressing any irregularities or outliers in the data that could affect the accuracy of the insights presented in the dashboards and reports.

Start building

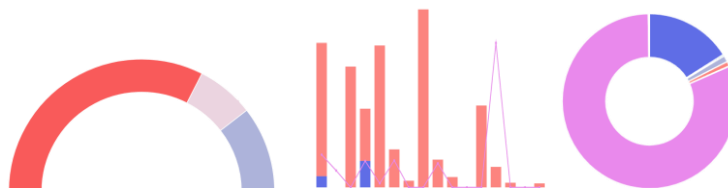
Create

User-friendly to serve your needs

We take great pride in offering a user-friendly dashboard tool where all the puzzle pieces of your data come together seamlessly. We've taken the concept of a lower bar seriously, ensuring it's set low enough to get you started on creating insightful visualizations, yet powerful enough to cater to your individual information visualization needs. With **drag and drop** support you can build your dashboard in a wrap.

Visualizations

Choose how to best display your data from chart elements like bar, line, combo and donut-charts, table, text and many more. Each one of them having a specific use to fit your needs.



**Line chart | Area chart | Column chart | Bar chart | Combo chart
Pie chart | Donut chart | Table | Gauge | Text**

Sort and filter

By sorting and filtering you can define what data you want to see, and in what order. Either the filter is pre-defined, or available for each user to set for themselves.

Drill-down

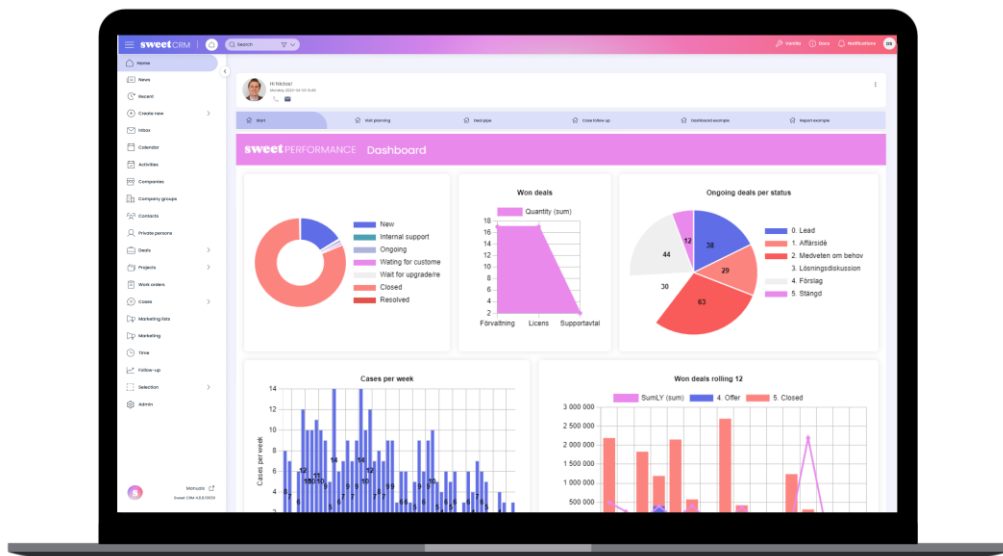
Need more details? No worries, you can dig deeper by using the drill-down functionality to find out more about the data in the chart.

Share your findings

Share

Share insights

It's easy to share your dashboards, or specific charts with your colleagues, stakeholder or anyone you like. It can be done by publishing the dashboard to make it available, framing it into your Sweet CRM or sharing it as a report.



Sweet Performance allows you to share your charts or dashboards in various ways:

- **Link sharing:** Share a link to the specific chart or dashboard, making it instantly accessible to your intended audience.
- **Embedding:** Integrate your charts seamlessly into your CRM, intranet, or any other platform that supports embedded elements for a cohesive user experience.
- **Image sharing:** Share your insights visually by exporting charts as images, allowing for easy inclusion in presentations, documents, or emails.
- **Data export:** For a more granular approach, export charts as CSV files, providing a data-driven option for those who prefer working with raw data.

About Sweet Automation

Sweet Automation is absolutely central to our Sweet Performance offering. Automation is the integration engine that connects our solutions with each other and with yours. Additionally, it is where we define and implement sophisticated business rules. The strength lies in its ability to weave together information from many different systems and integration points and manage rules and actions that span across all of them – all in the same place. It's so effective that we dare to promise that you will be amazed!



With Sweet Automation, you can revolutionize your business process automation by also integrating and digitizing them. Increase your efficiency, reduce operational costs and gain a sustainable competitive advantage. Our versatile tool streamlines processes, enables data-driven decision making, and offers seamless integration with your existing systems. Sweet Automation can be applied to various departments and processes, including digital onboarding, sales, service, streamlined processes, marketing automation, IoT integrations and much more.

[Read more](#)

sweet

Sweet add-ons: CRM

When our customers come to us, they often have an issue collecting and managing information effectively. This often involves labor-intensive manual steps, delays in retrieving crucial data, the tedium of data input into the CRM, and the struggle to maintain consistency. At Sweet, we understand these issues all too well, having encountered them countless times. Fortunately, we know just how to fix them!

Sweet CRM offer a transformative solution for businesses seeking to overcome information management challenges. By automating processes, ensuring data accuracy, and simplifying customer management, you can streamline your customer journey and pave the way for business growth. Experience the Sweet advantage and unlock the full potential of your customer interactions.



Key features

- **360° Customer view:** Sweet CRM provides a comprehensive 360° view of your customers. It consolidates all relevant data, including forms, files, agreements, support cases, interactions, and sales opportunities, into one centralized place.
- **Sales management:** Seamlessly navigate the entire customer journey, from lead management through actual sales and follow-up. This comprehensive and user-friendly platform serves as your daily guide, ensuring you know exactly what steps to take next.
Case management: With Sweet CRM, you can treat each form response as an individual case and efficiently manage these cases step by step. This feature streamlines your case management process, from distribution internally, to communication and closure.
- **Marketing:** Plan and execute your marketing plan.

[Read more](#)

sweet

Sweet add-ons: Digital forms

Sweet Forms for smooth data collection

To truly understand your customers and their needs, it's crucial to engage with them directly and gather valuable information. Sweet offers exceptional solutions for conducting digital forms or surveys and collecting customer insights through user-friendly online forms. With our powerful digital form capabilities, you can extract the information you need to make informed decisions and take meaningful actions.



Key features

- **Seamless digital forms creation:** Easily create customized forms or surveys tailored to your specific needs using Sweet's intuitive Form Designer. Design engaging questionnaires that capture customer opinions effectively.
- **Prepopulate forms with accessible data,** so the customer can focus on answering the things you do not already know.
- **Multi-channel distribution:** Reach your customers through various channels, including email, your customer portal or from your website.
- **Real-time responses:** Collect responses in real-time, allowing you to promptly analyze and act upon the feedback received. Stay agile and responsive to your customers' needs and preferences.
- **Actionable insights:** Empower your decision-making process with the valuable insights gathered from customer feedback. Identify areas for improvement, optimize your strategies, and enhance customer satisfaction.

[Read more](#)

sweet

Infrastructure & Storage

Setup

Our set-up model is easy, it's a cloud based SAAS solution. You have your own application where you can build custom dashboards.

Upgrades

Upgrades run smoothly and require no action on your part whatsoever.

Storage

Files uploaded to Sweet Performance are stored in the cloud. Data from integrations are just displayed but not stored in the platform.

Integrations

Sweet Automation enables all types of integrations

By using Sweet Automation, you can integrate with almost any data source of yours! Sweet Performance retrieve data from Sweet Automation and display it in your preferred way.

This is also the place where data modeling can be done for the more advanced users.

Sweet CRM

With Sweet CRM as data source, you can easily access your CRM data and start building reports and dashboards on it.

Azure DevOps

For those working in Azure DevOps, it's possible to connect you account and build Sweet Performance dashboards to gain new insights and easily share them.

Security and Compliance

Authentication

We offer two options of authentication

- Sweet username and password
- Microsoft Entra Id, where two-factor authentication can be used

User access controls

We provide various user levels, ranging from members to administrators, each with different access rights and privileges. Your assigned user level will determine the extent of access you have, what you can view and / or edit.

Information security

At Sweet, we prioritize the security of your data and we are proud to be ISO 27001 "Information Security Management" certified. With our well-established processes, we ensure that your data is always handled and managed securely. Data and information security are of utmost importance to us, and we go above and beyond to safeguard your valuable information.



Are you ready to get started with Sweet?



Contact us



sweet

 www.sweetsystems.se

 info@sweetsystems.se

 +46 (0)8 23 08 30

Sign up for our monthly **newsletter**